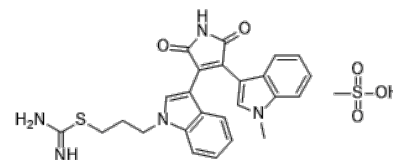


**Product Name** : Ro 31-8220 mesylate  
**Cat. No.** : PC-23428  
**CAS No.** : 138489-18-6  
**Molecular Formula** : C<sub>26</sub>H<sub>27</sub>N<sub>5</sub>O<sub>5</sub>S<sub>2</sub>  
**Molecular Weight** : 553.65  
**Target** : PKC  
**Solubility** : 10 mM in DMSO



## Biological Activity

Ro 31-8220 mesylate (Bisindolylmaleimide IX) is a potent pan-PKC inhibitor with IC<sub>50</sub> of 5, 24, 14, 27, 24 and 23 nM for PKC $\alpha$ , PKC $\beta$ I, PKC $\beta$ II, PKC $\gamma$ , PKC $\epsilon$  and rat brain PKC, respectively.

Ro 31-8220 also inhibits MAPKAP-K1b, MSK1, S6K1 and GSK3 $\beta$  (IC<sub>50</sub>s, 3, 8, 15, and 38 nM, respectively), with no effect on MKK3, MKK4, MKK6 and MKK7.

Ro 31-8220 has a 10-fold selectivity for PKC-alpha and a 4-fold selectivity for PKC-beta I over PKC-epsilon.

Ro 31-8220 inhibited the protein kinase C-mediated effect on inositol phosphate formation.

## References

Wilkinson SE, et al. Biochem J. 1993 Sep 1;294 (Pt 2):335-7.

Davies SP, et al. Biochem J. 2000 Oct 1;351(Pt 1):95-105.

Dieter P, et al. Biochem Biophys Res Commun. 1991 Nov 27;181(1):396-401.

**Caution: Product has not been fully validated for medical applications. Lab Use Only!**

E-mail: tech@probechem.com